



NONSUCH MANSION



Meetings Nonsuch Mansion

Corporate events brochure

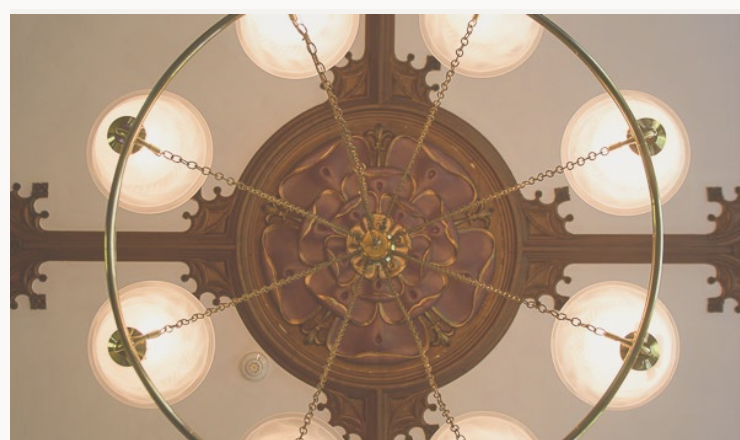
Welcome to Nonsuch Mansion

Nonsuch Mansion is the perfect location for a truly special day. One of Surrey's most sought-after venues, the spectacular Georgian house is set within 300 acres of beautiful grounds and parkland.

Imagine an amazing setting, an atmosphere buzzing with excitement, sensational food, attentive service and happy delegates..... Now put yourself at the heart of it all.

Nonsuch Mansion is located in Nonsuch Park, less than 40 minutes from Central London, with stunning grounds for drinks receptions, lawn games and al fresco food stalls.

With a bespoke approach we ensure your brand and company objectives are met throughout the day.



Serving great memories - Nonsuch Mansion

Exceptional food & drink

Our story began over 30 years ago when a group of food and hospitality enthusiasts gathered around a kitchen table, united by their love for exceptional cuisine and warm hospitality.

Today, we continue to carry forward that passion, expertly coordinating events that are truly memorable and leave a lasting memory.

Our commitment to great food starts with seasonally and sustainably sourced produce, with a bespoke and creative approach taken to each and every event we deliver.



Attention to detail

We offer an award-winning and comprehensive service for every event.

With a team of experienced chefs, event planners and hospitality professionals, we take pride in delivering a seamless and memorable catering experience every time.

Our commitment to quality, our attention to detail, and our personalised approach have earned us a reputation for being one of the leading catering companies in the UK.

Through your dedicated team, we ensure that every detail is taken care of, leaving you to enjoy your event to the utmost.





Rooms & capacities

Rooms & capacities



Orchid room
Cabaret 80, Theatre 120, Boardroom 40



Rose room
Cabaret 40, Theatre 60, Boardroom 20



Accommodation
11 bedrooms, 7 bathrooms, 1 lounge

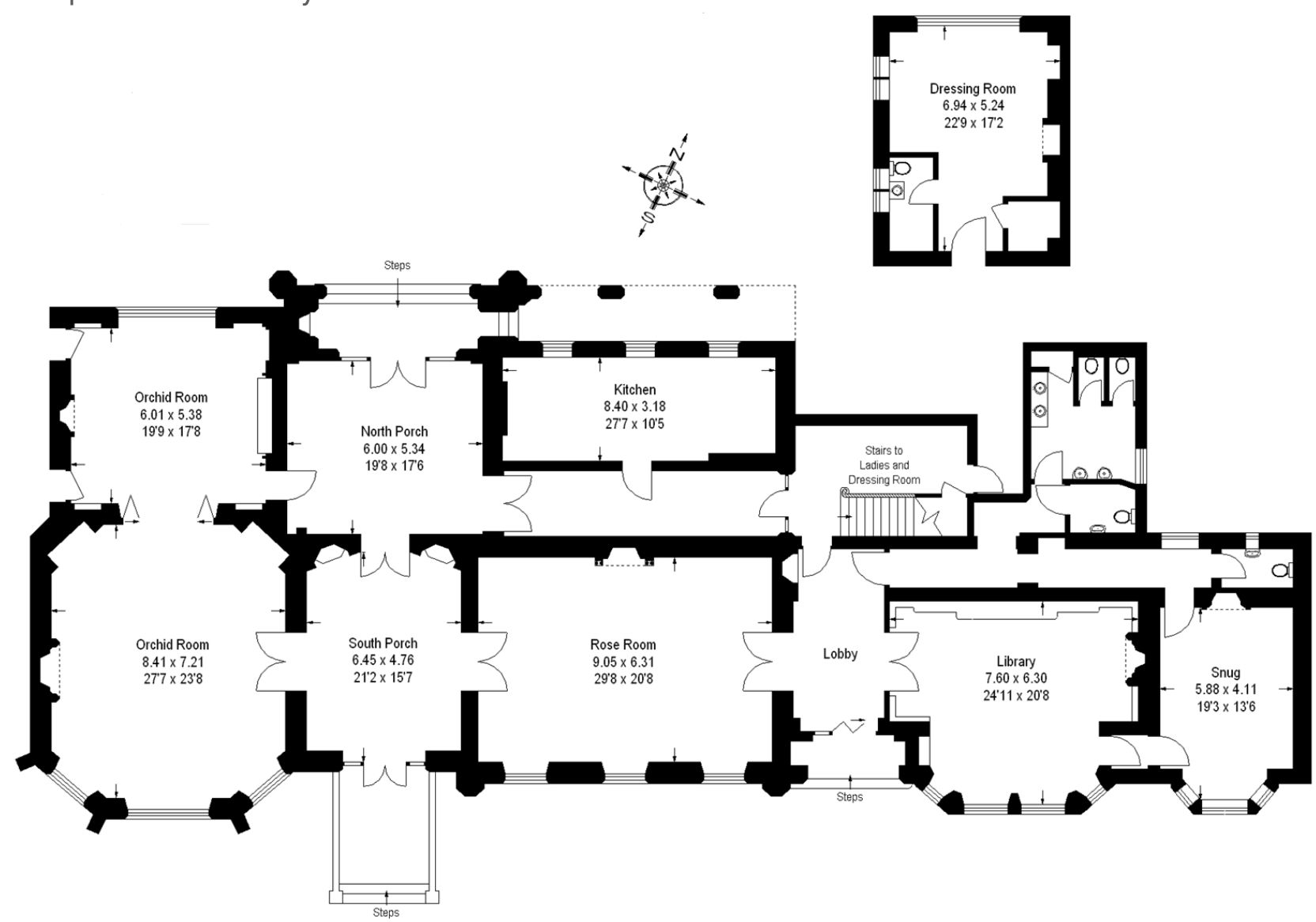


Library
Break out area

Floor plan

Event space

The world really is your oyster at Nonsuch Mansion...
An unforgettable setting, exclusive hire, award winning service,
sensational food and a tenacity that never settles for anything but
the best.
'We are only as good as our last event' is the mantra for our
reputation and your events' success.



Serving great memories - Nonsuch Mansion

Floor plan

Accommodation

The night doesn't need to end when the music does! Stay the night in our stunning second floor apartment with 11 boutique bedrooms. The cost will be £2,000 per night including a continental breakfast in the large breakfast room from 8 am the next day.



Serving great memories - Mansueth Mansion



Package

DDR package

Looking for a comprehensive conference package? Our DDR - day delegate rate package has got you covered. Our dedicated team will ensure that your event runs smoothly from start to finish, with everything you need to make your conference or meeting a success.

Our DDR package includes:

- Exclusive venue hire 9:00 – 17:30
- Working sandwich lunch
- Four tea and coffee breaks
- Morning and afternoon snack
- Fiber-optic broadband
- Dedicated staff for smooth event operations

It's also flexible, so you can tailor it to your exact requirements. Whether you need additional equipment or catering options, our team will work with you to create a tailor-made package that meets your needs. Book our DDR package today.

£60 per person (excluding VAT)

Upgrade to fork hot buffet for £10 + VAT/person.

Minimum of 30 apply





Something extra

Food

	Price per person (excluding VAT)
English breakfast	£22
Vegetarian breakfast	£18
Continental breakfast	£14.50
Breakfast baps (bacon/egg/sausage)	£8
Selection of pastries	£3.50
Snacks (flapjacks/brownies/pastries)	£3.50
6 X Canapes	£18
4 X Bowl food	£35



Beverage

	Price per person (excluding VAT)
Tea, coffee & biscuits (per serving)	£4
Free flowing beer & wine – 2 hours	£29
Free flowing beer & wine – 4 hours	£39



Serving great memories – 87 Barts Close

We would love to hear from you

Email: events@nonsuchmansion.com

Call: 020 8786 7392

Instagram: @nonsuchmansion

Website: bovingdons.co.uk/venues/nonsuch-mansion

Location

Rail: 10 minutes from Cheam station

Tube: 10-minute car journey from Morden Station on the Northern Line

Road: We are easily accessible by road close to the A3 and M25 with plenty of onsite parking spaces.

