



NONSUCH MANSION



# *Nonsuch Mansion*

External catering event brochure 2024



# Welcome to Nonsuch Mansion

Nonsuch Mansion is the perfect location for a truly special day. One of Surrey's most sought-after venues, the spectacular Georgian house is set within 300 acres of beautiful grounds and parkland.

Imagine an amazing setting, an atmosphere buzzing with excitement and emotion, sensational food, attentive service, flowing drinks, great music, happy guests.... Now put yourself at the heart of it all.

We are dedicated to the art of creating a stunning event just for you, an occasion that will be talked about and looked back on fondly by everyone involved. We are here to listen, guide you through the choices and help you make the decisions that will create the biggest impact for you and your guests.



*Serving great memories - Nonsuch Mansion*





# Your venue

# Venue info

You are more than welcome to hire external caterers if we can't offer the specific cuisine you're looking for.

## Dry hire of the mansion includes:

- Exclusive use of the mansion for 12 hours (00.00 latest)
- Nonsuch mansion's tables and chairs

All other items such as food, drinks, linen, glass wear, staffing ect. Will be sourced through your caterers.

## Civil Ceremony – 120 people

We are licensed for civil ceremonies in our Orchid Room and can fit exactly 120 people seated.

## A seated meal in the mansion – 120 people

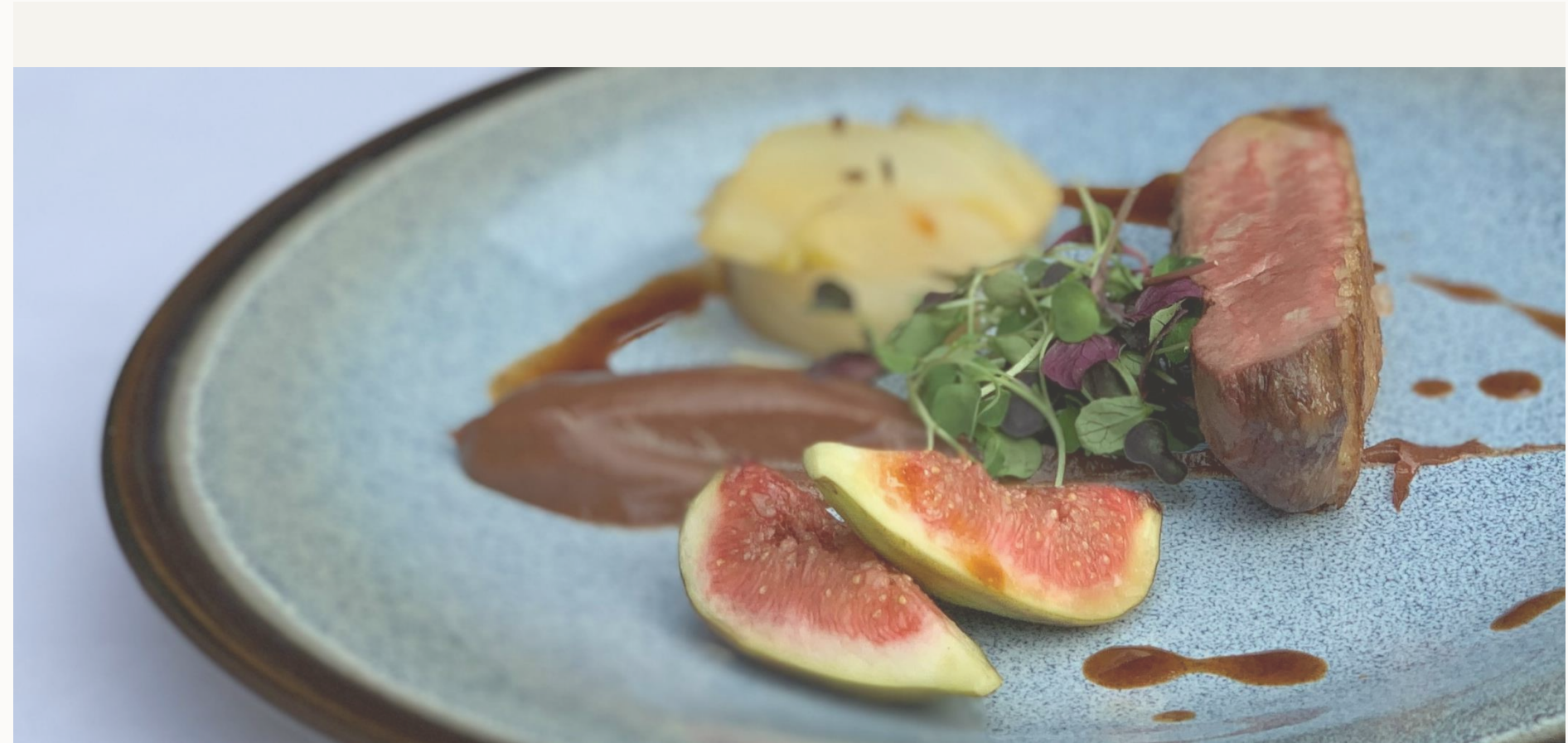
We can seat 120 guests in the Orchid room for your sit-down meal on a maximum number of 12 round tables with 10 guests around each. There is not enough space to fit a stage if your guest list is at full capacity.

## A seated meal in a marquee on our formal lawns – 300 people

The marquee will be situated on our formal lawns surrounded with beautiful gardens and a stunning view of Nonsuch Mansion. This is something that needs to be sourced externally and at an additional cost. The marquee must be erected the morning of the wedding and dismantled by 10am the following day.

## Standing capacity inside The Mansion – 200 people

If you're looking to have a party inside the mansion, our maximum capacity is 200 standing.





# Rooms & capacities



**Orchid room**  
Dining 120, Theatre 120



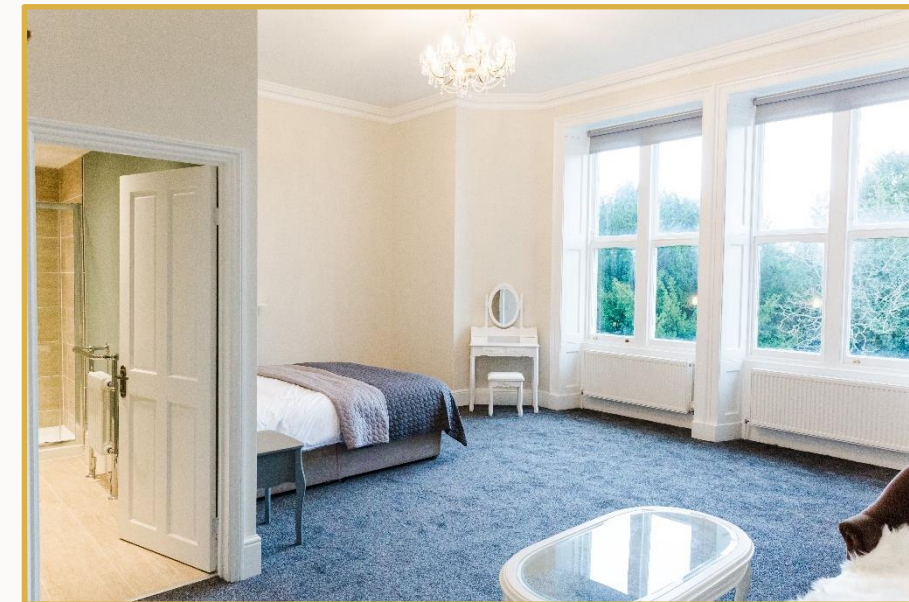
**Rose room**  
Dining 50, Drinks reception and Dance floor space



**Library**  
Bar area



**Dressing room**



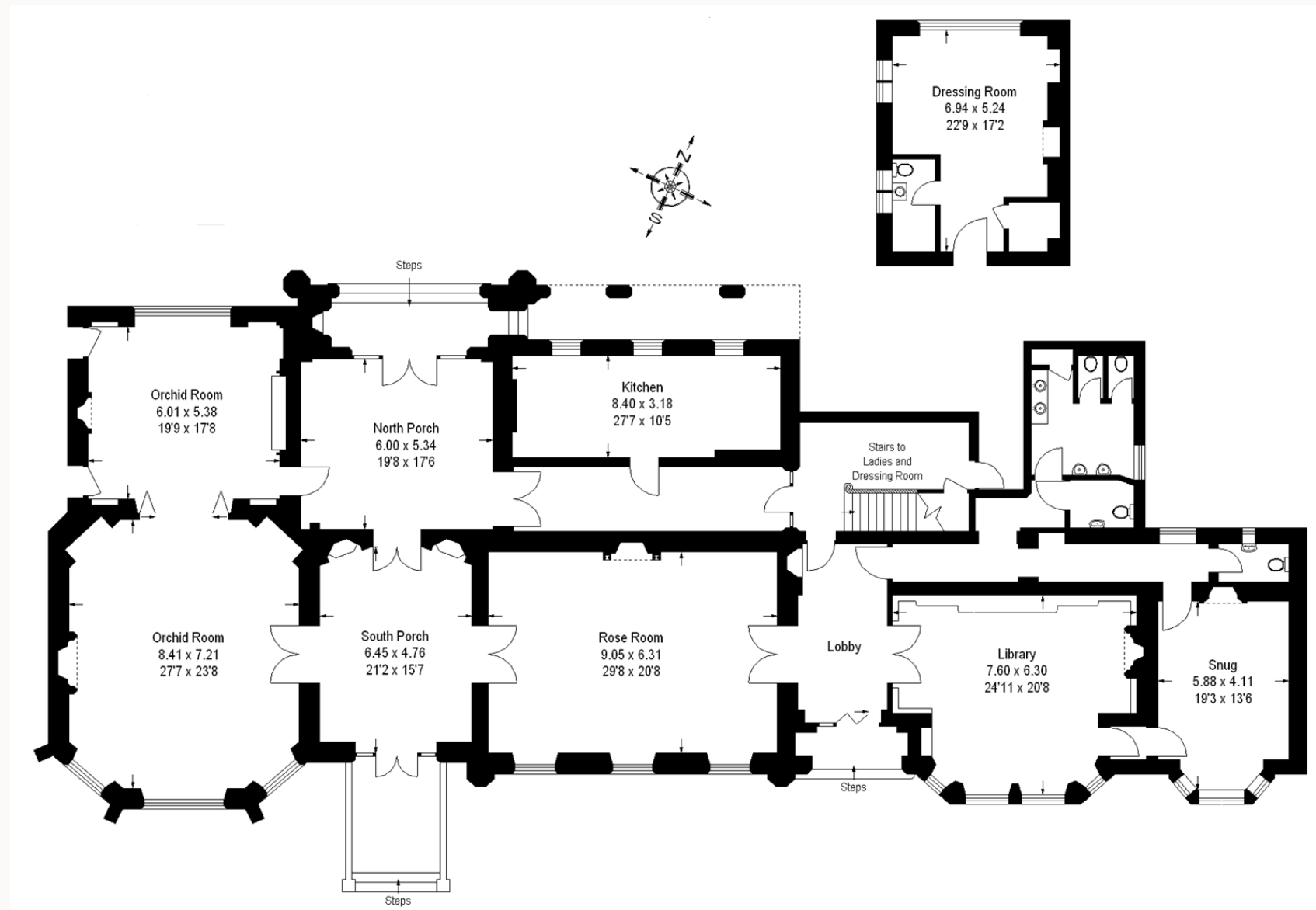
**Accommodation**  
11 bedrooms, 7 bathrooms, 1 lounge



# Floor plan

## Event space

The world really is your oyster at Nonsuch Mansion...  
An unforgettable setting, exclusive hire and award-winning service.  
'We are only as good as our last event' is the mantra for our reputation and your events' success.



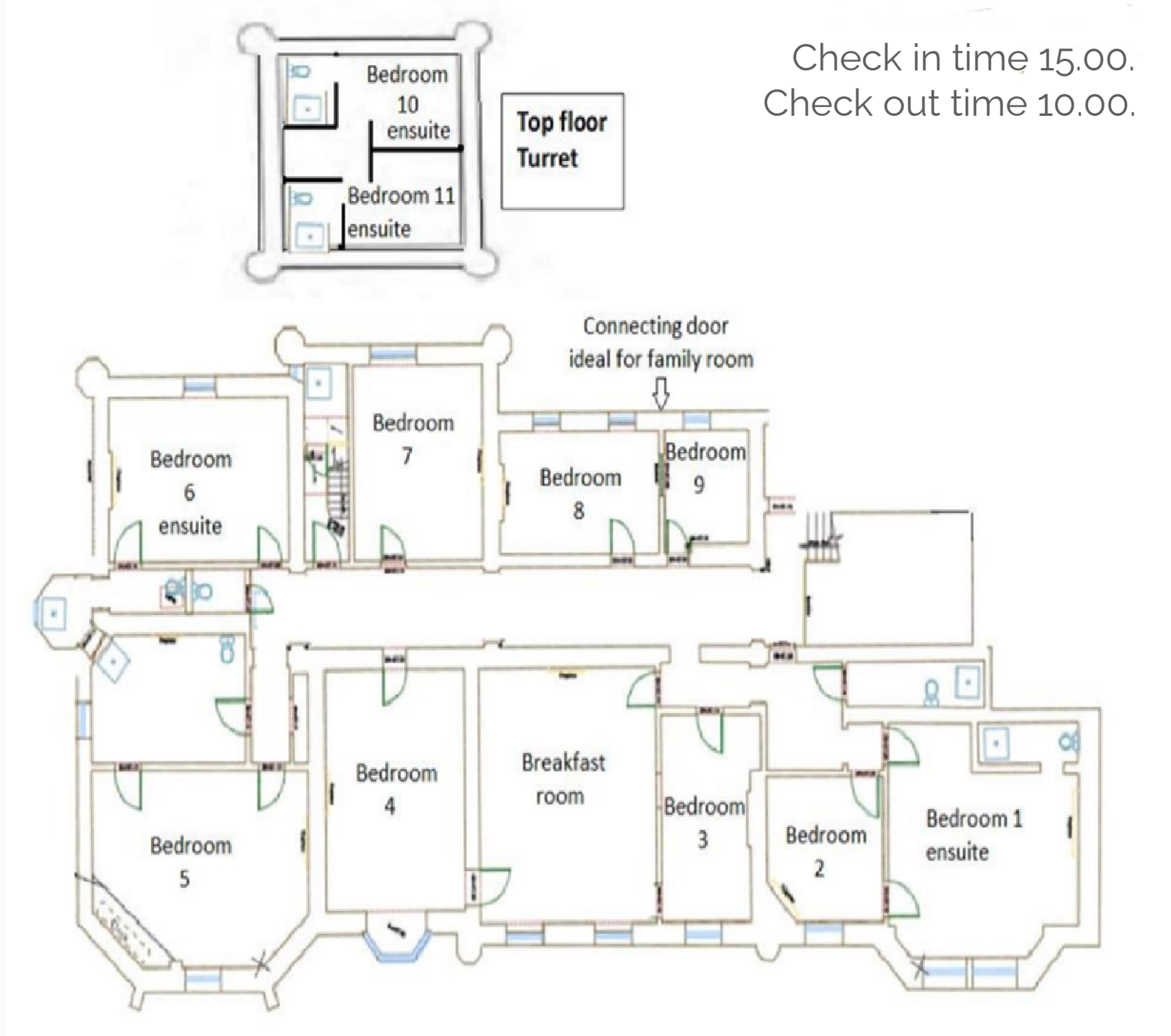
*Serving great memories - Nonsuch Mansion*



# Floor plan

## Accommodation

The night doesn't need to end when the music does! Stay the night in our stunning second floor apartment with 11 boutique bedrooms. The cost will be £2,000 per night on top of venue hire which includes a continental breakfast in the large breakfast room from 8am the next day.



*Serving great memories - Nonsuch Mansion*





# Approved caterers



# Listed caterers

## Sapna

Traditional Pakistani, Punjabi and Gujarati Cuisine

020 8965 5145

## Greenleaf

Traditional North Indian, Sri Lankan, Afgani, Lebanese, Indo Chinese and Gujarati Cuisine

020 8574 7779

## Ragamama Ragasaan

Traditional Punjabi, Gujarati, Indo Chinese, African and Sri Lankan Cuisine

020 8839 0880

## Payal

Traditional Pakistani, Punjabi and Gujarati Cuisine

0203 150 2520

## McCalla's

Traditional Caribbean Cuisine

020 8115 2155

## Burrells

Traditional West Indian & African Cuisine

020 7221 9252





# Event management

Some useful information for you and your caterer:

- We will be on hand leading up to the event for any questions you and your caterer may have.
- Your caterer must have adequate staff available to setup, run and clear down the event. We will supply one member of our team to be onsite on the day to act as a point of contact. Please ask for our 'dry hire key information' pack if you wish to know more on this.
- The mansion must be left in a clean and tidy state. All equipment and trash relating to the event must be removed immediately so that Nonsuch Mansion is available for normal use the next day.
- Guests are welcome to use natural confetti and bubbles outdoors only. Please note that throwing rice is prohibited because of the danger it poses to wildlife. Confetti cannons are strictly prohibited in all areas of the site.
- We are not licensed for fireworks, floating lanterns or pyrotechnic displays of any nature.







# Pricing



# Exclusive hire

| VENUE HIRE  | High season<br>June - Sept | Mid season<br>April, May, Oct, Dec | Low season<br>Jan, Feb, Mar, Nov |
|-------------|----------------------------|------------------------------------|----------------------------------|
| Sun - Thurs | £7,000                     | £6,500                             | £6,000                           |
| Friday      | £8,500                     | £8,500                             | £8,500                           |
| Saturday    | £10,000                    | £10,000                            | £10,000                          |

Accommodation  
£2,000

11 boutique bedrooms on your wedding day with a continental breakfast served the morning after

Check in 15.00  
Check out 10.00

Excluding public holidays | License until midnight - £1,200 per hour to extend.





# We would love to hear from you

**Email:** [events@nonsuchmansion.com](mailto:events@nonsuchmansion.com)

**Call:** 020 8786 7392

**Instagram:** @nonsuchmansion

**Website:** [bovingdons.co.uk/venues/nonsuch-mansion](http://bovingdons.co.uk/venues/nonsuch-mansion)

