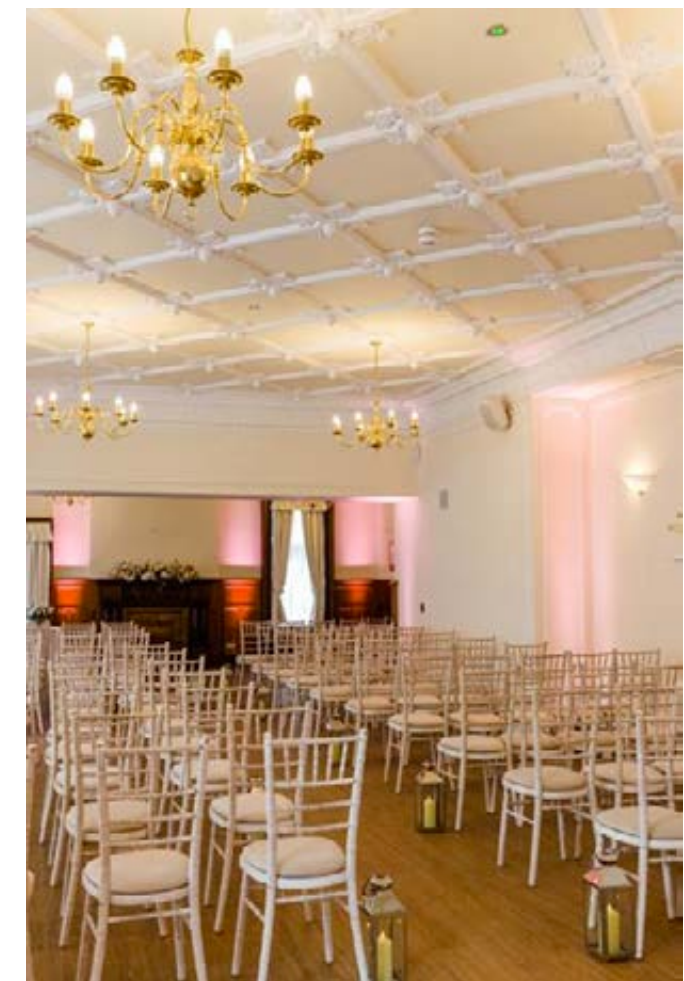


Weddings at Ewell Court House



Welcome to Ewell Court House

Ewell Court House is a refined Surrey wedding venue located in Ewell. This gorgeous manor comes steeped in history, dating back to the iconic 18th century. With its fascinating past, elegant interiors, and manicured grounds, the venue offers an idyllic retreat where couples can immerse themselves in a bygone era. Imagine an amazing setting, an atmosphere, sensational food, attentive service, flowing drinks, great music, happy guests.... Now put yourself at the heart of it all. At Ewell Court House we pride ourselves on creating the day of your dreams. From curating the smallest details with our experienced planners, to finding the perfect menu to amaze your guests, we are here every step of the way.



Exceptional food & drink

Our story began over 30 years ago when a group of food and hospitality enthusiasts gathered around a kitchen table, united by their love for exceptional cuisine and warm hospitality.

Today, we continue to carry forward that passion, expertly coordinating events that are truly memorable and leave a lasting memory. Our commitment to great food starts with seasonally and sustainably sourced produce, with a bespoke and creative approach taken to each and every event we deliver.



Attention to detail

We offer an award-winning and comprehensive service for every event. With a team of experienced chefs, event planners and hospitality professionals, we take pride in delivering a seamless and memorable catering experience every time. Our commitment to quality, our attention to detail, and our personalised approach have earned us a reputation for being one of the leading catering companies in the UK. Through your dedicated team, we ensure that every detail is taken care of, leaving you to enjoy your event to the utmost.



Your Venue



Rooms & capacities



Social Suite
Dining: 100
Ceremony: 100



Ante Room
Standing reception: 90



Foyer
Bar area



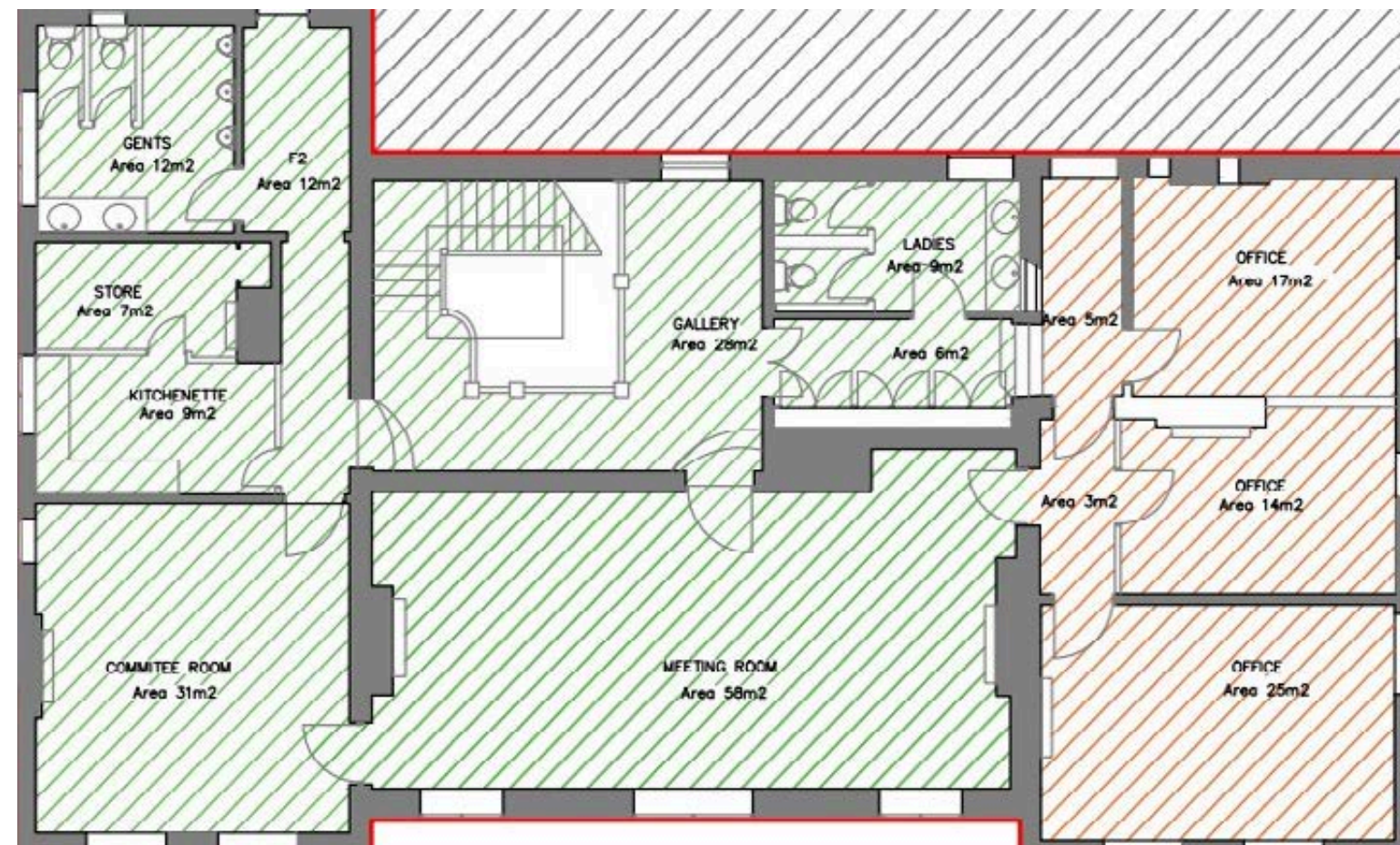
Dressing room

Floor plan

Event space

The world really is your oyster at Ewell Court House.... An unforgettable setting, exclusive hire, award winning service, sensational food and a tenacity that never settles for anything but the best.

'We are only as good as our last event' is the mantra for our reputation and your events' success.



Your Day



Suggested Timings

To help you get a better sense of your wedding at Ewell Court House, I will start with a snapshot of timings, which we can refine over time as your ideas and desires become clearer. We truly believe that the best way of understanding how your day will work with us is by booking an appointment to walk and talk you through your wedding at the venue and our unique approach to planning your day.



12.00pm	The bridal party and beauty team are welcomed to Ewell Court House and are shown to the Pampering Suite to get ready
2.30pm	Guests take their seat in the Social Suite, ready for the Bride to arrive
3.00pm	Your Wedding Ceremony begins in the Social Suite
3.30pm	Married... and now it's time to celebrate! Well chilled reception drinks and canapés served on the Formal patio or in the Ante room in case of inclement weather Time for photos and mingling, why not think about some background music to set the scene?
5.00pm	The Wedding Breakfast is announced Guests are seated and you make your entrance as the newly married couple
5.30pm	A delicious and seasonal three course meal is served
7.00pm	Speeches, toast drinks are served
7.30pm	Formalities over, evening guests arrive and now it's time to party Everyone makes their way back into the Social Suite for cake cutting You both take to the floor for the first dance
9.00pm	Evening nibbles are served Dancing and frivolity continue throughout the evening
11.45pm	Music ends and the bar closes The last remaining guests take their leave
12.00am	Guests take their leave

Details



Making it a reality

We have included the following essential furniture and equipment for your special occasion.

- Full field kitchen equipment as required
- Back of house or front of house bar and all equipment
- Bovingdons classic crockery, cutlery and glassware
- Staff uniform and subsistence
- Coat rails and hangers
- Seating for up to 100 guests
- 5ft round tables
- Crisp white table linen
- Elegant white napkins
- Beautiful canapé platters



Meet your dream team

Our exceptionally talented professionals bring imagination, inspiration and outstanding service to every aspect of special events, ensuring an unforgettable event that will leave guests mesmerised. Based on your guest numbers and event timings, we will build a team to meet all your needs:

Event Managers
Porters Waiting
Staff Cloak Room
Attendants Bar Staff
Chefs



We would love to hear from you

Email: enquiries@ewellcourthouseevents.co.uk

Call: 0203 834 7799

Instagram: [@ewellcourthouseevents](https://www.instagram.com/ewellcourthouseevents)

Website: bovingdons.co.uk/venues/ewell-court-house/

