



87  
BARTS  
CLOSE

**Meeting & conference  
2024**



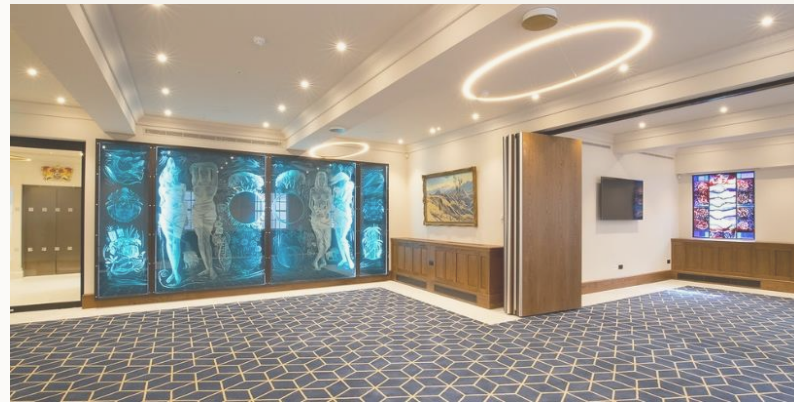
bovingdons



# Welcome to 87 Barts Close

Experience sophistication and charm at 87 Barts Close, a historic venue in the heart of London. Our grade II listed building offers a unique sanctuary for your event, with meticulously designed indoor and outdoor spaces that bring your vision to life.

Discover the grandeur of our captivating event areas, including the Great hall. Perfect for meetings, conferences, gala dinners, award ceremonies, corporate events, and weddings, our team ensures flawless execution, leaving a lasting impression on your guests.



*Serving great memories - 87 Barts Close*



# Rooms & capacities



# Rooms & capacities

Step into the heart of the new Barts Square development and discover our historic setting, complete with the finest contemporary services. With five versatile event spaces, including the magnificent Great Hall, elegant Court Suite, Reception area, and a discreet Mezzanine floor, all housed beneath a stunning roof terrace in the heart of the city.

Whether you're planning a corporate meeting, conference, networking event, or sit-down dinner, our spaces are perfect for all types of occasions. We also offer our spaces for wedding receptions, carvery lunches, wine and dine events, and more.

Our expert team is always on hand to answer any questions you may have about hiring 87 Barts Close for your next event.

	Banqueting sprigs	Banqueting rounds	Cabaret	Boardroom	Theatre style	Classroom	Standing reception
The Great hall	156	120	110	44/88/132	200	63	250
Court suite (L)	60	40	40	30/60	120	30	170
Court suite (S)	10	10	10	10	35	8	25
Reception room	20	40	40	20	80	30	150
Mezzanine	-	-	-	12	-	-	-
Rooftop terrace	-	-	-	-	-	-	80

*Serving great memories - 87 Barts Close*



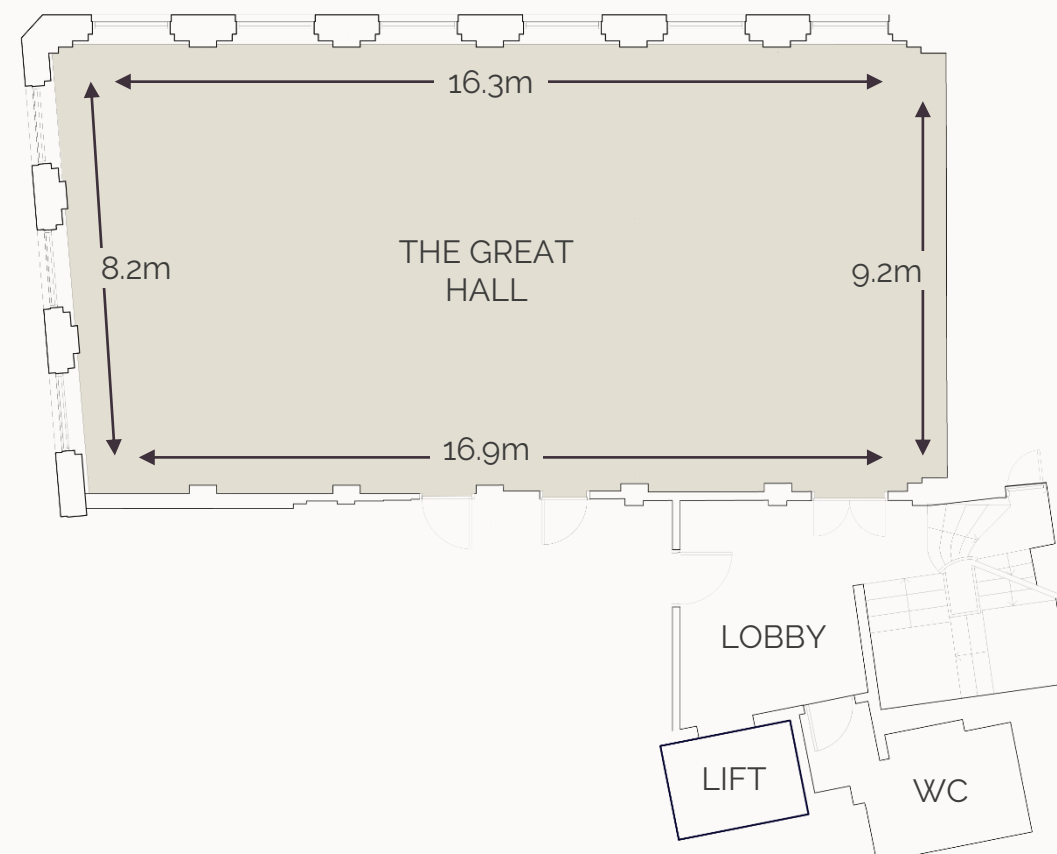
# Great hall

Step inside our magnificent Great hall and be transported to a world of grandeur and elegance! Our stunning wood-panelled walls, natural light, and state-of-the-art AV with technical support make it the perfect space for any occasion. Plus, you'll love the historic City Livery Hall atmosphere and the chance to admire the City of London's largest tapestry.

**SEATED:** 156

**RECEPTION:** 250

**THEATRE:** 200



*Serving great memories - St Bart's Close*

# Court suites

Enjoy the refined charm of our renovated Court rooms, perfect for various events such as formal gatherings, receptions, conferences, and workshops. Our space is versatile and can be partitioned to accommodate larger or smaller groups, offering maximum flexibility for your event.

Large Court suite

**SEATED:** 60

**RECEPTION:** 170

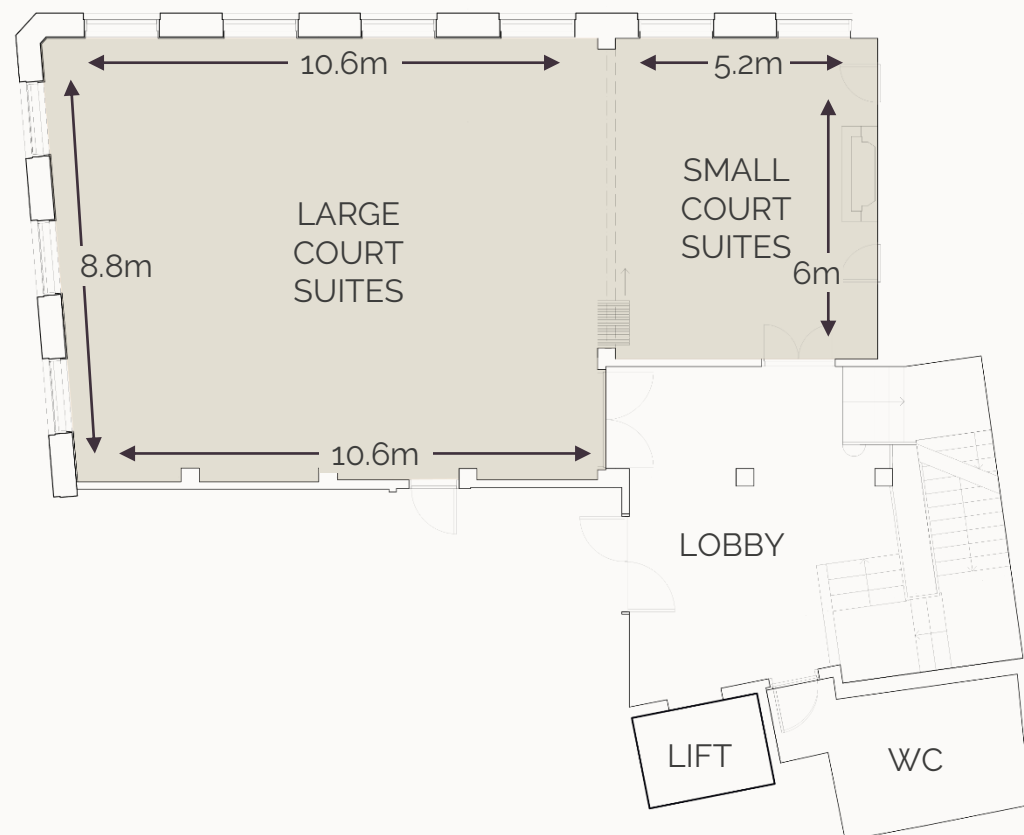
**THEATRE:** 120

Small Court suite

**SEATED:** 10

**RECEPTION:** 25

**THEATRE:** 35





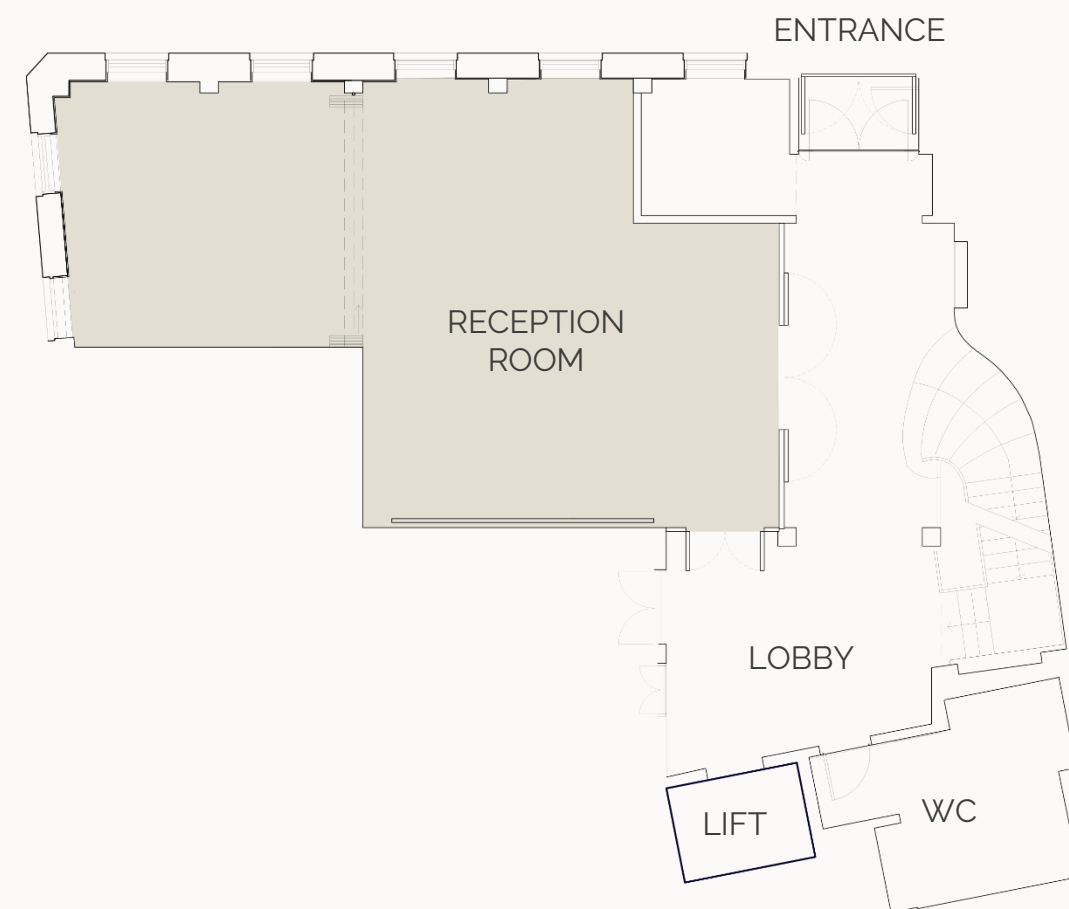
# Reception room

We proudly present our ground floor facility, which we believe to be the finest multi-purpose room in the City. From meet and greet events to registration, partitioned break out areas, or a bar setup, the choice is entirely yours.

**SEATED:** 40

**RECEPTION:** 150

**THEATRE:** 40



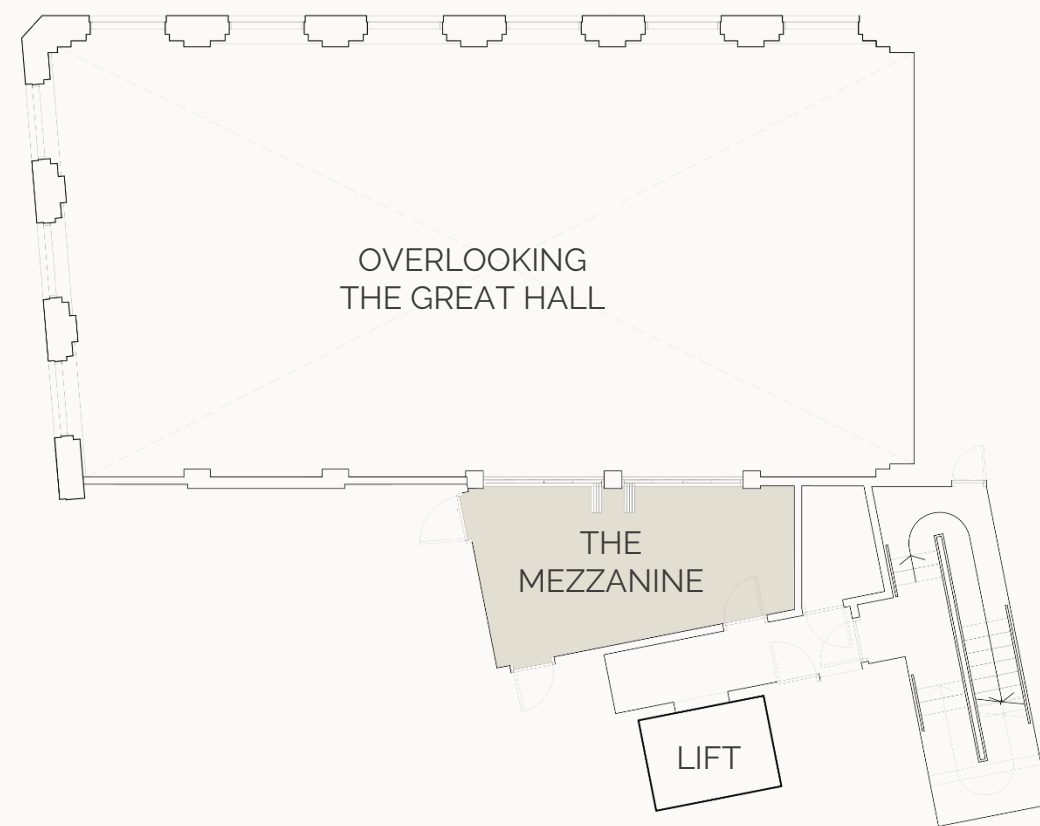
*Serving great memories - 57 Barts Close*



# Mezzanine

Introducing our brand-new meeting and dining events space, complete with options for breathtaking views into the Great hall or complete privacy. We consider the Mezzanine to be the ultimate choice for private or directors' style dining and meetings, offering discretion, opulence, and exclusivity all in one luxurious package.

**SEATED: 12**



*Serving great memories - 87 Barts Close*

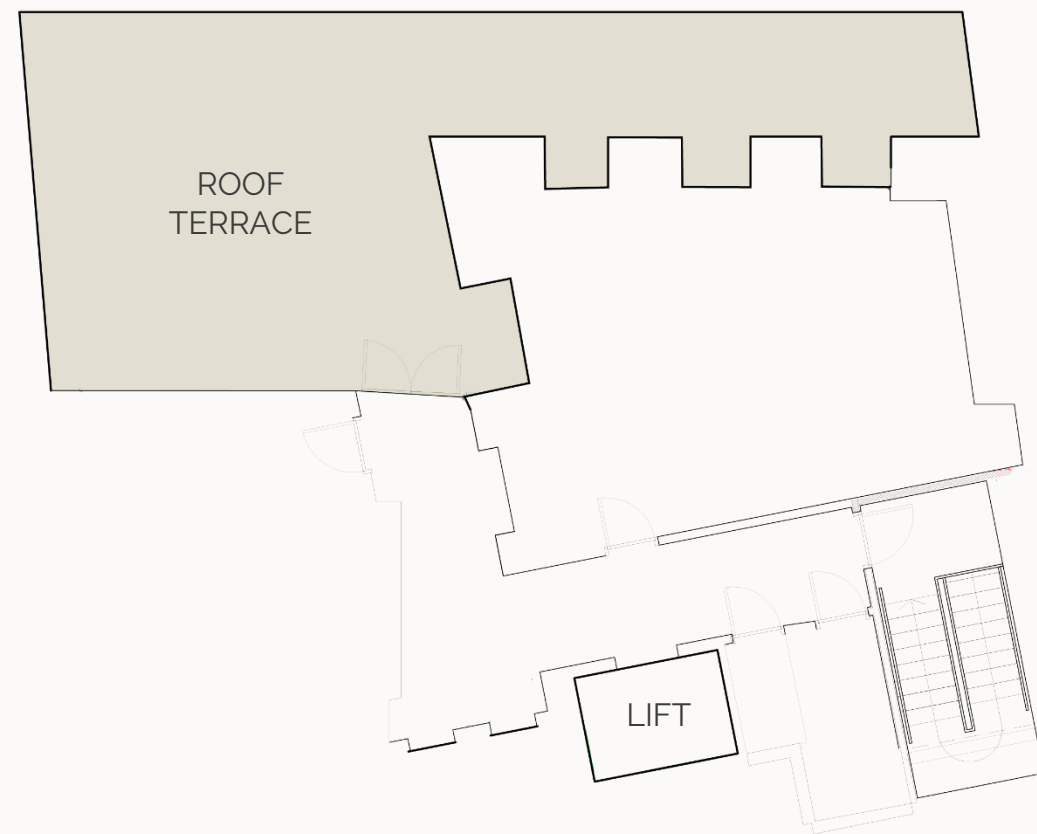




# Roof terrace

Elevate your event to new heights with the option to hire our stunning rooftop terrace as part of your package or independently. Our rooftop garden is licensed to be open until 22:00 daily, offering you the opportunity to enjoy breathtaking views of London while sipping on champagne and nibbling on delicious canapes.

**STANDING:** 80



*Serving great memories - 57 Bar's Close*



# Day delegate rate



# DDR package

Looking for a comprehensive conference package? Our DDR - day delegate rate package has got you covered. Our dedicated team will ensure that your event runs smoothly from start to finish, with everything you need to make your conference or meeting a success.

Our DDR package includes:

- Room hire 9am – 5pm (allocation based on numbers)
- Working sandwich lunch
- Tea & Coffee on arrival with pastries
- Afternoon Tea & Coffee break with sweet snack
- Dedicated staff for smooth event operations

It's also flexible, so you can tailor it to your exact requirements. Whether you need additional equipment or catering options, our team will work with you to create a tailor-made package that meets your needs. Book our DDR package today.

**£66 per person (excluding VAT)**

Upgrade to finger hot buffet for £11 + VAT/person.

Minimum of 20 apply



*Serving great memories – 87 Bar's Close*



**Create your own**

# Room hire

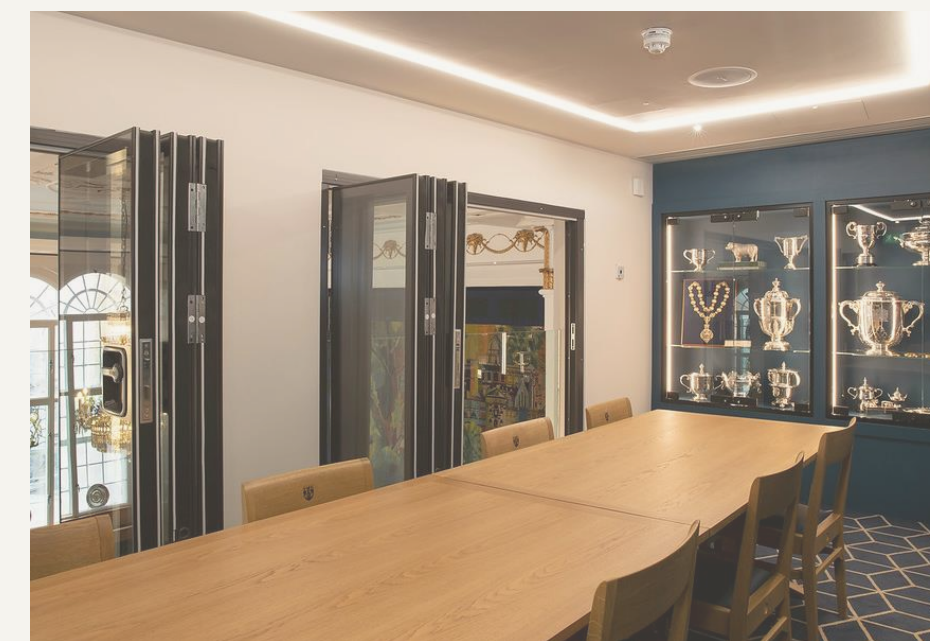
	Full Day 9AM – 5PM	Half Day 9AM – 1PM 1PM – 5PM	Additional hours
Whole Venue	£3000	£1950	£450
Great Hall	£2000	£1300	£300
Court Suites	£1000	£650	£150
Reception	£850	£550	£128
Roof Terrace	£850	£550	£128
Mezzanine	£500	£325	£75

Security is required for events scheduled after 5PM - £250

Manned cloakroom - £150

AV - £440

pricing excludes VAT



# Food

	Price per person (excluding VAT)
English breakfast	£22
Vegetarian breakfast	£18
Continental breakfast	£14.50
Breakfast baps (bacon/egg/sausage)	£8
Selection of pastries	£3.50
Snacks (flapjacks/brownies/pastries)	£3.50
Working sandwich lunch	£32
Hot finger buffet lunch	£42
6 X Canapes	£18
4 X Bowl food	£35





# Beverage

	Price per person (excluding VAT)
Tea, coffee & biscuits (per serving)	£4
All day tea, coffee & biscuits	£8
Free flowing beer & wine – 2 hours	£29
Free flowing beer & wine – 4 hours	£39



*Serving great memories – 57 Barrels Close*



# We would love to hear from you

**EMAIL:** [87bartsclose@bovingdons.co.uk](mailto:87bartsclose@bovingdons.co.uk)

**CALL:** 0203 478 9440

**INSTAGRAM:** @87bartsclose

**WEBSITE:** [bovingdons.co.uk/87bartsclose](http://bovingdons.co.uk/87bartsclose)

## Location

**ADDRESS:** 87 Bartholomew Close, London, EC1A 7EB

**TRAIN STATION:** Farringdon (7 min walk)

**TUBE:** Barbican (4 min walk) or St Paul's – 6 min walk



*Serving great memories – 87 Barts Close*